

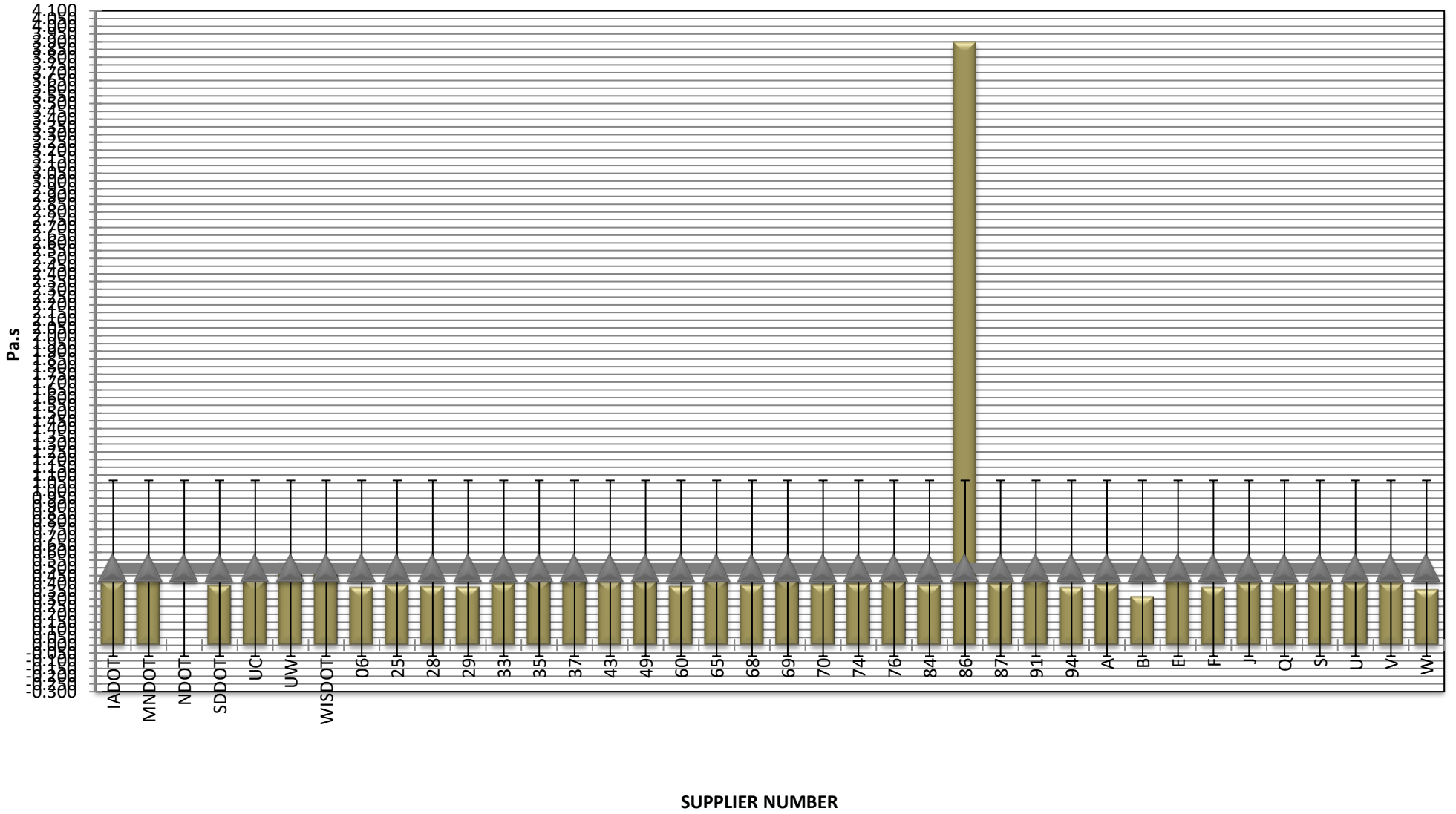


**COMBINED STATE BINDER GROUP ROUND ROBIN SUMMARY B 2022-1  
PG 64S-22**

	Rot. Visc.	ODSR	RTFO DSR	PAVDSR	Mass Loss	S-value	m-value	Jnr @ 100 Pa	% Rec. 100 Pa	Jnr @ 3200 Pa	% Rec. @ 3200 Pa
<b>A</b>											
03	0.392	1.30		4,122	0.031	179	0.316	2,692	4.70	3,001	1.30
19	0.392	1.28		3,838	0.043	165	0.319	2,748	4.60	3,056	1.30
51	0.400	1.30		3,957	0.048	171	0.314	2,705	5.20	3,033	1.30
54	0.391	1.29		3,962	0.103	172	0.324	2,725	4.70	3,037	1.30
97	0.394	1.30		3,994	0.052	177	0.315	2,692	4.00	2,941	1.30
<b>AVERAGE</b>	<b>0.394</b>	<b>1.29</b>		<b>3,975</b>	<b>0.055</b>	<b>173</b>	<b>0.318</b>	<b>2,712</b>	<b>4.64</b>	<b>3,014</b>	<b>1.30</b>
<b>B</b>											
01	0.310	1.34		4,040	0.031	173	0.318	2,520	4.17	2,780	1.26
17	0.295	1.42		4,150	0.023	176	0.316	2,370	4.59	2,610	1.39
45	0.338	1.41		3,970	0.035	184	0.313	2,350	4.60	2,590	1.42
<b>AVERAGE</b>	<b>0.314</b>	<b>1.39</b>		<b>4,053</b>	<b>0.030</b>	<b>178</b>	<b>0.316</b>	<b>2,413</b>	<b>4.45</b>	<b>2,660</b>	<b>1.36</b>
<b>E</b>											
15	0.450	1.28		3,492	0.019	182	0.318	2,810	3.09	3,070	0.00
39	0.450	1.28		3,859	0.010	181	0.320	2,770	3.53	3,060	0.00
89	0.450	0.04		2,989	0.030	173	0.321	2,750	3.10	3,030	0.02
<b>AVERAGE</b>	<b>0.450</b>	<b>0.87</b>		<b>3,447</b>	<b>0.020</b>	<b>178.6667</b>	<b>0.320</b>	<b>2,777</b>	<b>3.24</b>	<b>3,053</b>	<b>0.01</b>
<b>F</b>											
02	0.373	1.31		4,588	0.055	182	0.317	2,590	3.60	2,880	0.27
11	0.375	1.32		4,041	0.020	184	0.315	2,690	3.03	2,980	0.18
34	0.374	1.29		4,447	0.049	175	0.316	2,660	3.49	2,950	0.20
48	0.373	1.37		4,436	0.003	178	0.318	2,420	5.02	2,800	0.00
56	0.373	1.37		4,529	0.004	177	0.318	2,620	3.07	2,960	0.00
62	0.375	1.36		4,440	0.010	175	0.315	2,470	4.31	2,830	0.00
66	0.375	1.27		4,010	0.03	173	0.325	2,270	4.54	2,530	0.59
75	0.376	1.26		4,255	0.023	175	0.324	2,940	2.87	3,250	0.00
90	0.380	1.28		4,065	0.024	161	0.327	2,680	6.45	3,120	0.04
99	0.376	1.26		4,818	0.033	176	0.325	2,610	3.87	2,910	0.24
<b>AVERAGE</b>	<b>0.375</b>	<b>1.31</b>		<b>4,363</b>	<b>0.025</b>	<b>175.6</b>	<b>0.320</b>	<b>2,595</b>	<b>4.03</b>	<b>2,921</b>	<b>0.15</b>
<b>J</b>											
05	0.405	1.28		3,440	0.006	178	0.314	2,500	4.14	2,750	1.46
08	0.415	1.32		4,660	0.006	185	0.312	2,540	4.61	2,810	1.31
10	0.390	1.32		4,130	0.019	171	0.330	2,504	4.14	2,851	0.53
31	0.408	1.37		4,540	0.003	184	0.308	2,930	3.48	3,210	1.12
36	0.397	1.37		3,680	0.046	170	0.325	2,367	4.03	2,623	0.37
41	0.414	1.34		4,190	0.003	183	0.310	2,630	4.03	2,890	1.32
44	0.390	1.29		4,127	0.018	183	0.321				
52	0.389	1.30		4,152	0.019	188	0.317				
<b>AVERAGE</b>	<b>0.401</b>	<b>1.32</b>		<b>4,115</b>	<b>0.015</b>	<b>180.25</b>	<b>0.317</b>	<b>2,579</b>	<b>4.07</b>	<b>2,856</b>	<b>1.02</b>
<b>Q</b>											
21	0.395	1.32		3,920	0.028	172	0.330	2,400	4.62	2,630	1.49
23	0.394	1.27		3,839	0.016	172	0.334	2,540	3.66	2,780	1.35
73	0.392	1.30		3,900	0.016	174	0.334	2,530	4.24	2,770	1.33
93	0.397	1.29		3,500	0.020	165	0.336	2,620	4.29	2,890	1.26
<b>AVERAGE</b>	<b>0.395</b>	<b>1.30</b>		<b>3,790</b>	<b>0.020</b>	<b>171</b>	<b>0.334</b>	<b>2,523</b>	<b>4.20</b>	<b>2,768</b>	<b>1.36</b>
<b>S</b>											
53	0.401	1.33		3,713	0.023	169	0.321	2,683	3.08	2,953	0.05
64	0.401	1.32		3,677	0.020	170	0.322	2,874	2.88	3,180	-0.11
<b>AVERAGE</b>	<b>0.401</b>	<b>1.33</b>		<b>3,695</b>	<b>0.022</b>	<b>170</b>	<b>0.322</b>	<b>2,779</b>	<b>2.98</b>	<b>3,067</b>	<b>-0.03</b>
<b>U</b>											
13	0.400	1.30		4,070	0.029	168	0.330	2,480	3.95	2,730	0.70
24	0.406	1.35		4,130	0.025	173	0.328	2,450	3.93	2,700	0.65
<b>AVERAGE</b>	<b>0.403</b>	<b>1.33</b>		<b>4,100</b>	<b>0.027</b>	<b>170.5</b>	<b>0.329</b>	<b>2,465</b>	<b>3.94</b>	<b>2,715</b>	<b>0.68</b>
<b>V</b>											
58	0.400	1.28		3,900	0.015	165	0.321	3,013	2.47	3,300	0.00
78	0.400	1.27		4,194	0.007	171	0.322	2,933	3.32	3,254	0.00
81	0.402	1.32		4,319	0.034	173	0.326	2,819	3.42	3,138	0.00
<b>AVERAGE</b>	<b>0.401</b>	<b>1.29</b>		<b>4,138</b>	<b>0.019</b>	<b>170</b>	<b>0.323</b>	<b>2,922</b>	<b>3.07</b>	<b>3,231</b>	
<b>W</b>											
07	0.364	1.35		3,745	0.028	179	0.325	2,570	4.10	2,790	0.00
95	0.354	1.35		3,531	0.03	176	0.329	2,590	3.70	2,790	0.30
<b>AVERAGE</b>	<b>0.359</b>	<b>1.35</b>		<b>3,638</b>	<b>0.029</b>	<b>178</b>	<b>0.327</b>	<b>2,580</b>	<b>3.90</b>	<b>2,790</b>	<b>0.15</b>
<b>Y</b>											
04	0.373	1.30		4,250	0.019	183	0.315	2,944	2.98	3,233	0.27
47	0.370	1.26		4,350	0.024	182	0.309	2,747	3.45	3,030	0.47
<b>AVERAGE</b>	<b>0.372</b>	<b>1.28</b>		<b>4,300</b>	<b>0.022</b>	<b>182.5</b>	<b>0.312</b>	<b>2,846</b>	<b>3.22</b>	<b>3,132</b>	<b>0.37</b>

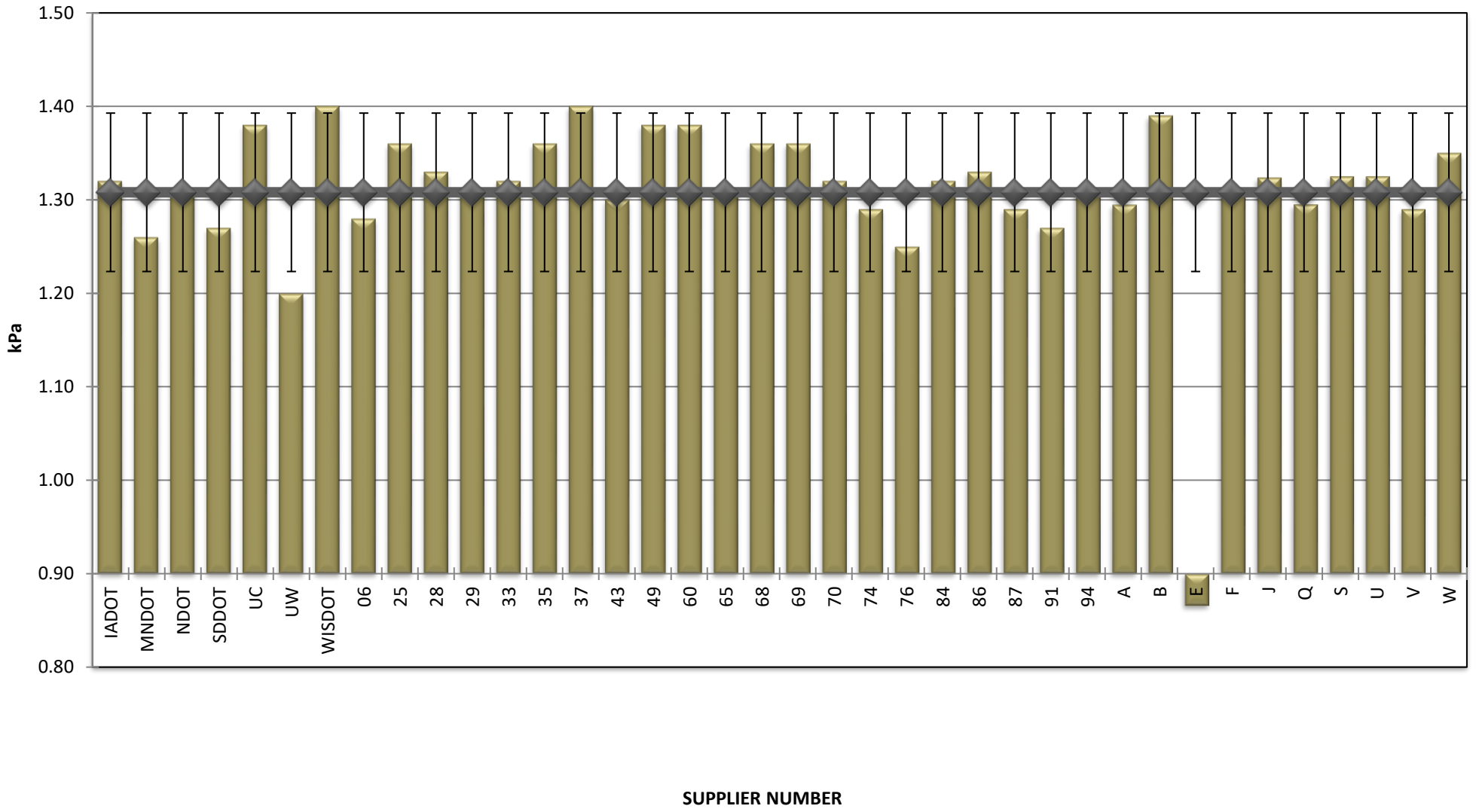
COMBINED STATE BINDER GROUP ROUND ROBIN  
 SUMMARY B 2022-1  
 PG 64S-22

ROTATIONAL VISCOSITY



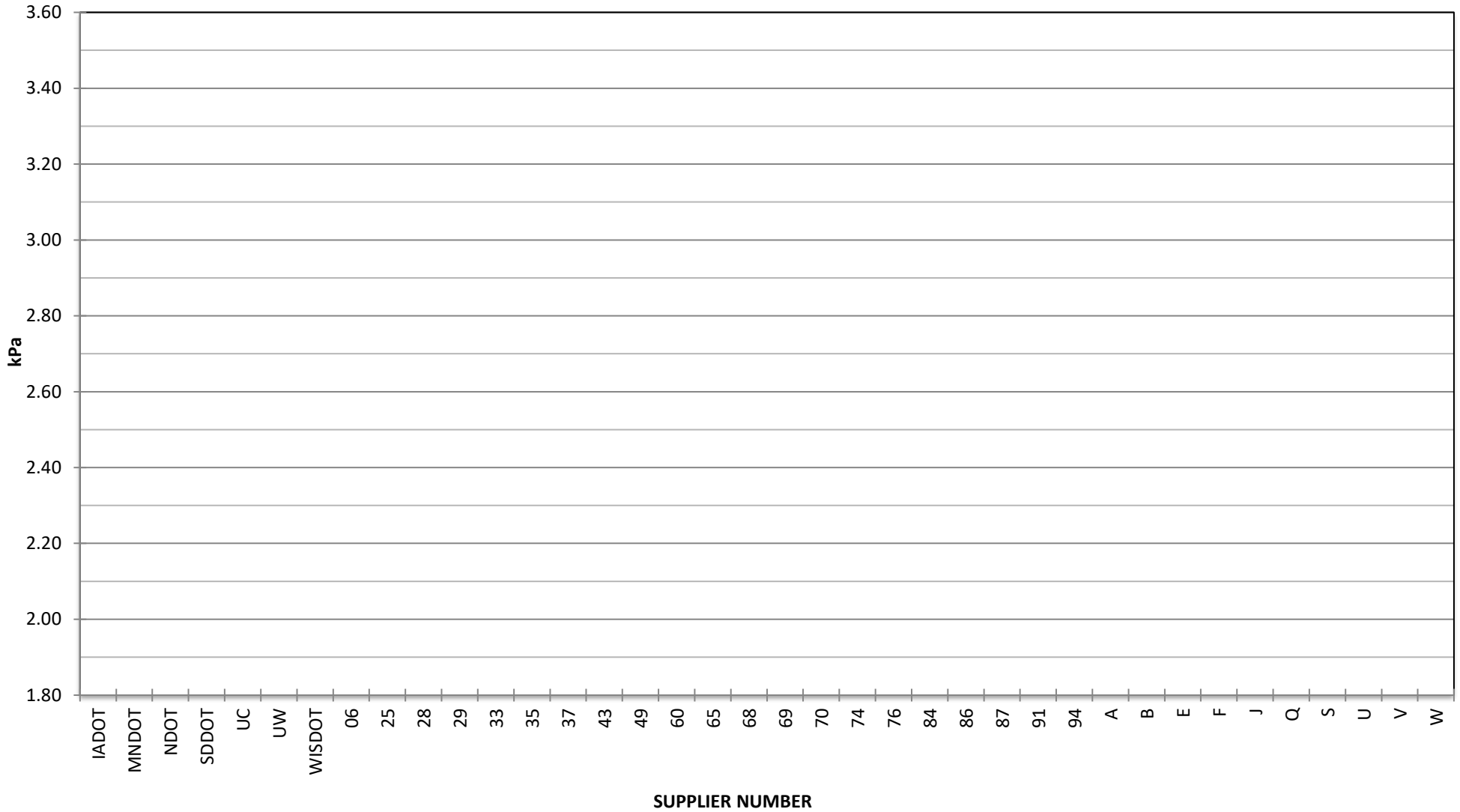
**COMBINED STATE BINDER GROUP ROUND ROBIN  
SUMMARY B 2022-1  
PG 64S-22**

**DSR - ORIGINAL**



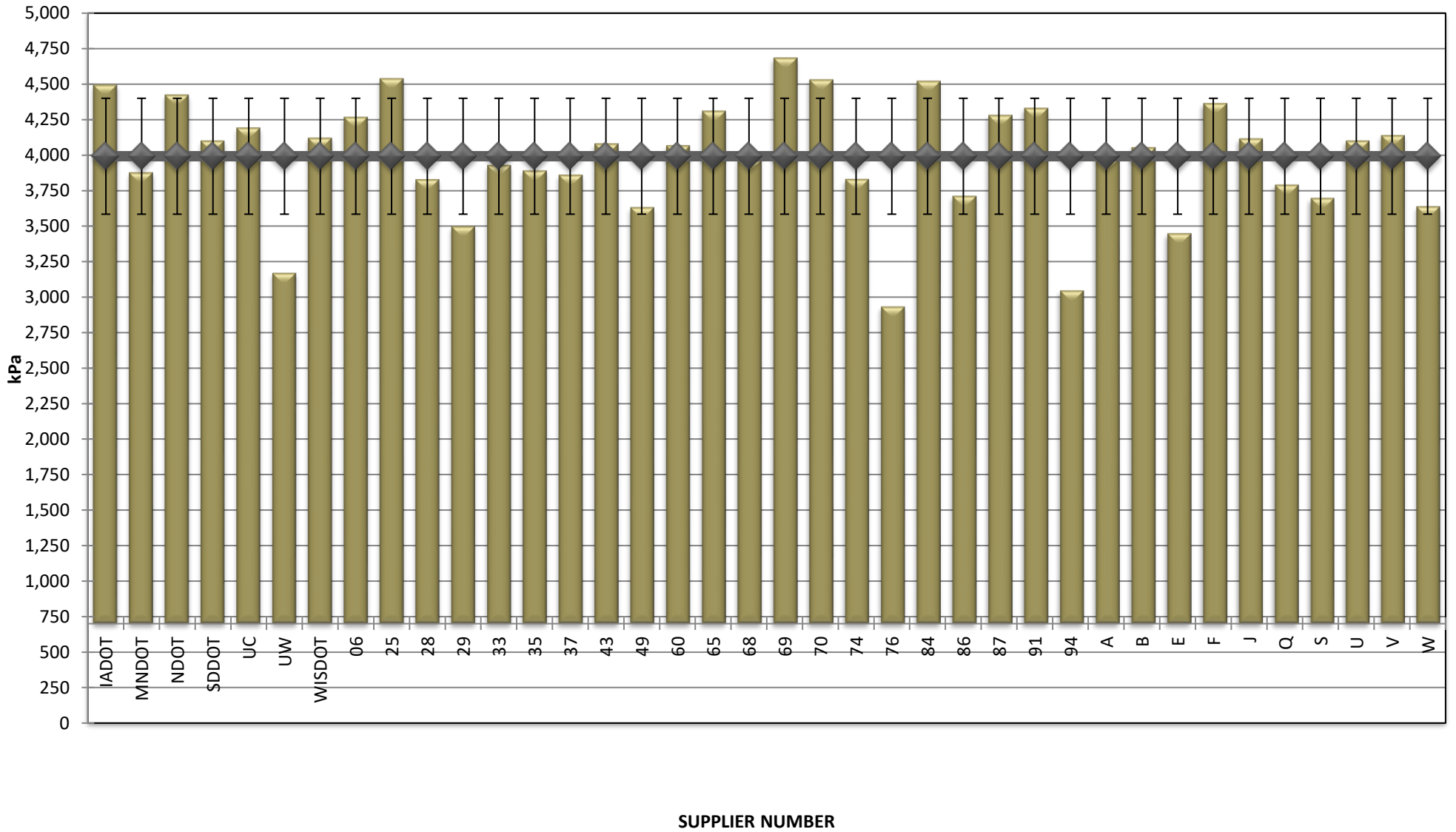
COMBINED STATE BINDER GROUP ROUND ROBIN  
SUMMARY B 2022-1  
PG 64S-22

DSR - RTFO



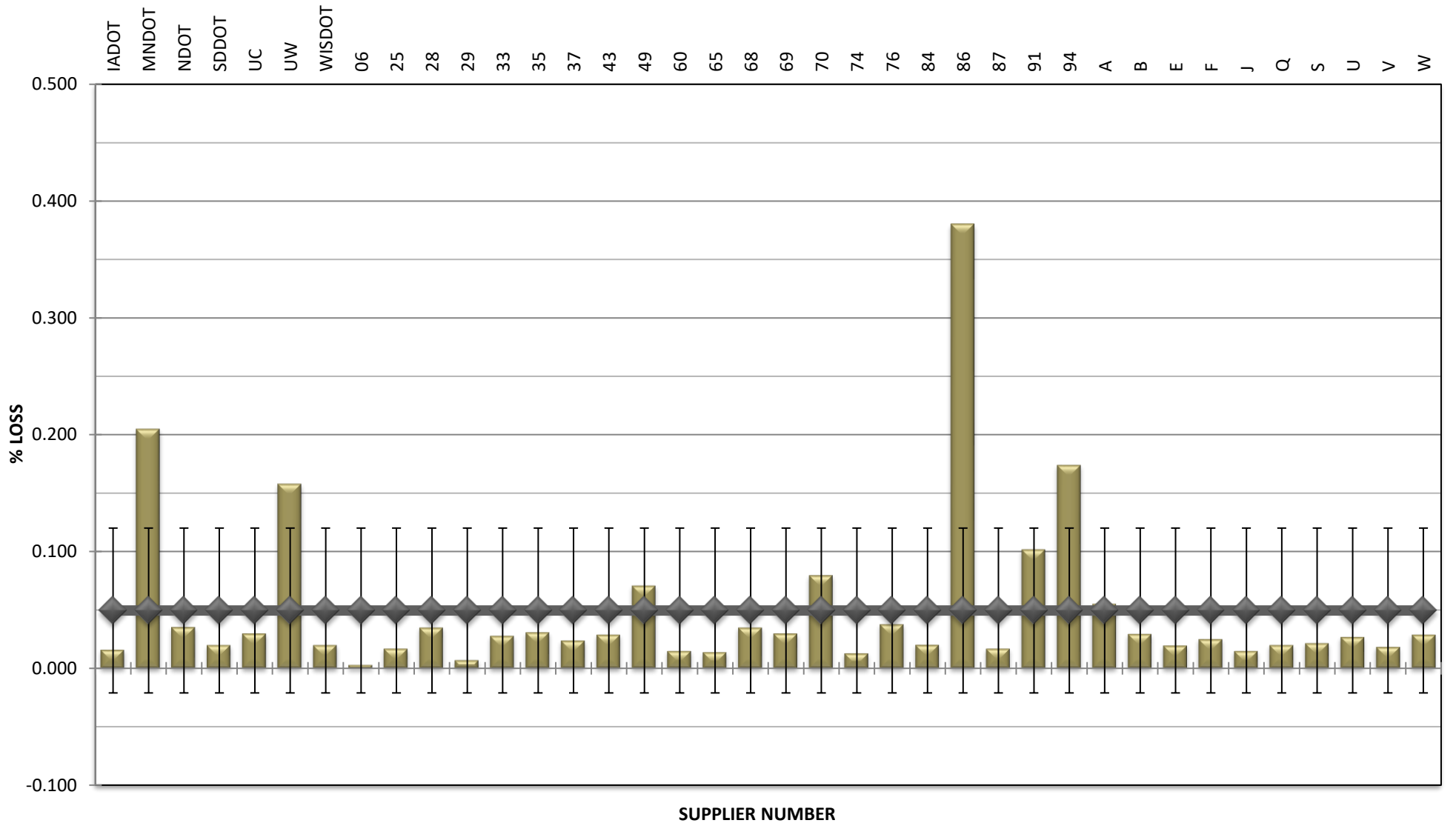
**COMBINED STATE BINDER GROUP ROUND ROBIN  
SUMMARY B 2022-1  
PG 64S-22**

**DSR - PAV**



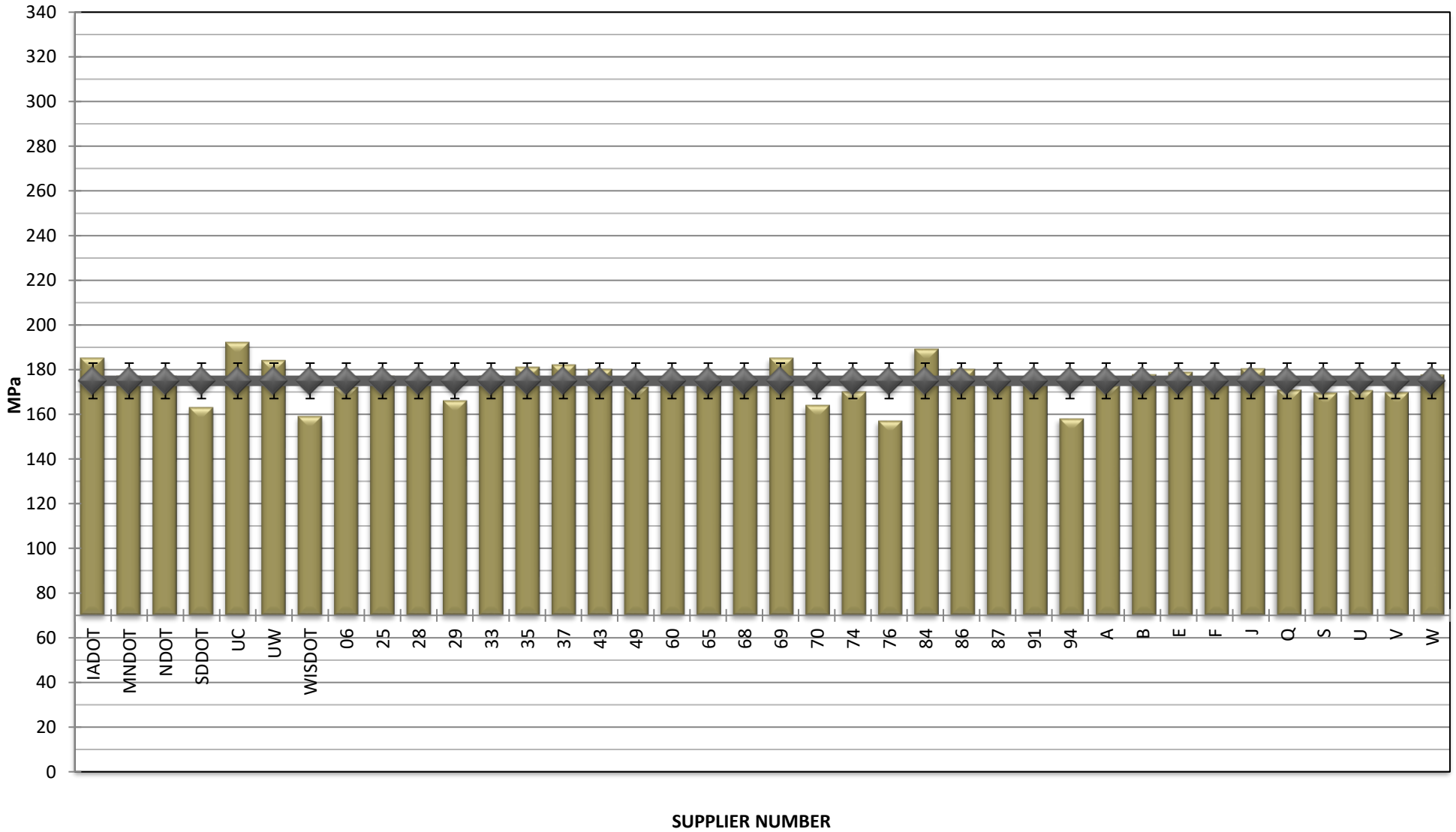
**COMBINED STATE BINDER GROUP ROUND ROBIN  
SUMMARY B 2022-1  
PG 64S-22**

**RTFO MASS LOSS**



COMBINED STATE BINDER GROUP ROUND ROBIN  
SUMMARY B 2022-1  
PG 64S-22

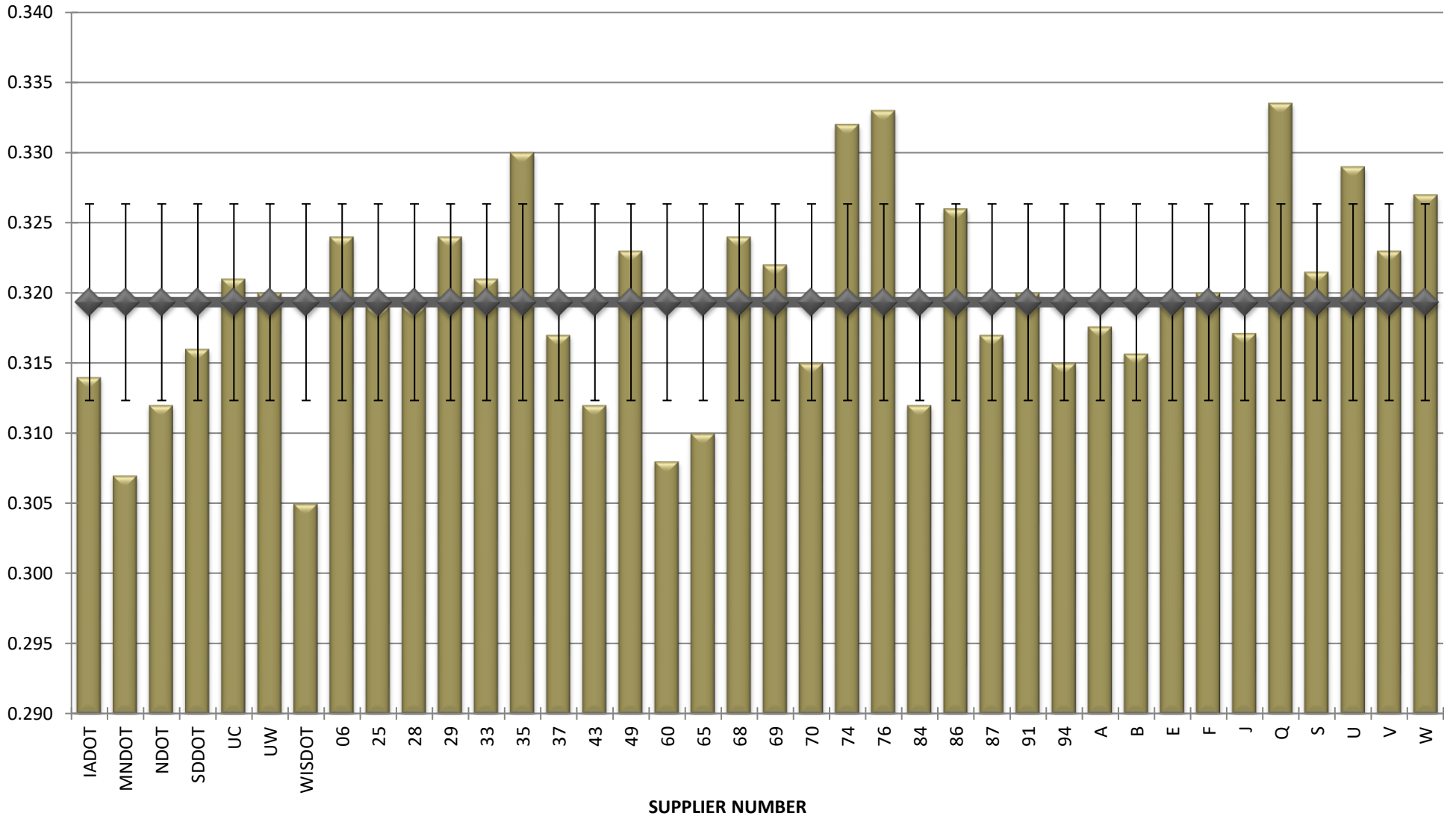
BBR STIFFNESS





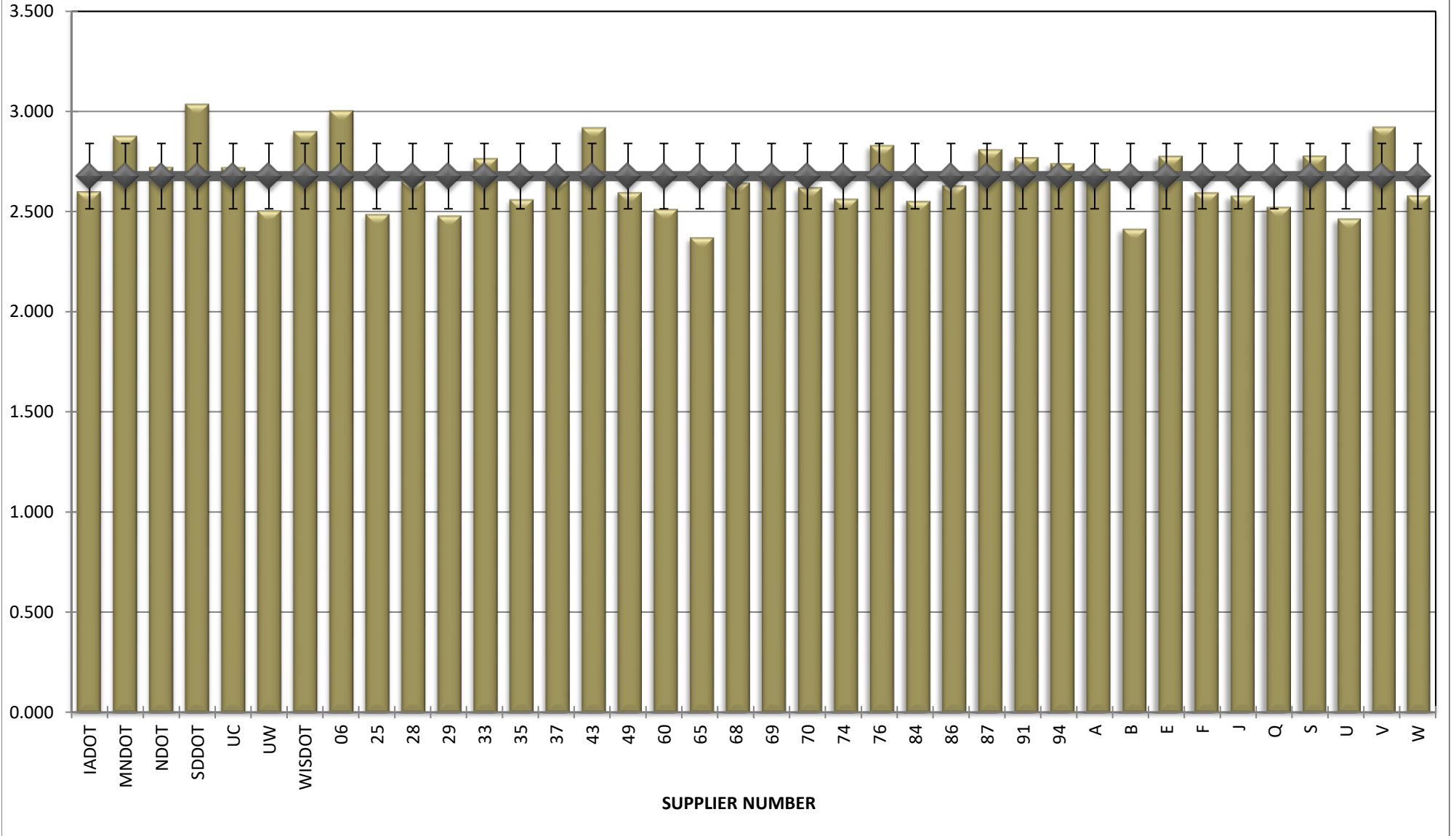
**COMBINED STATE BINDER GROUP ROUND ROBIN  
SUMMARY B 2022-1  
PG 64S-22**

**BBR m-VALUE**



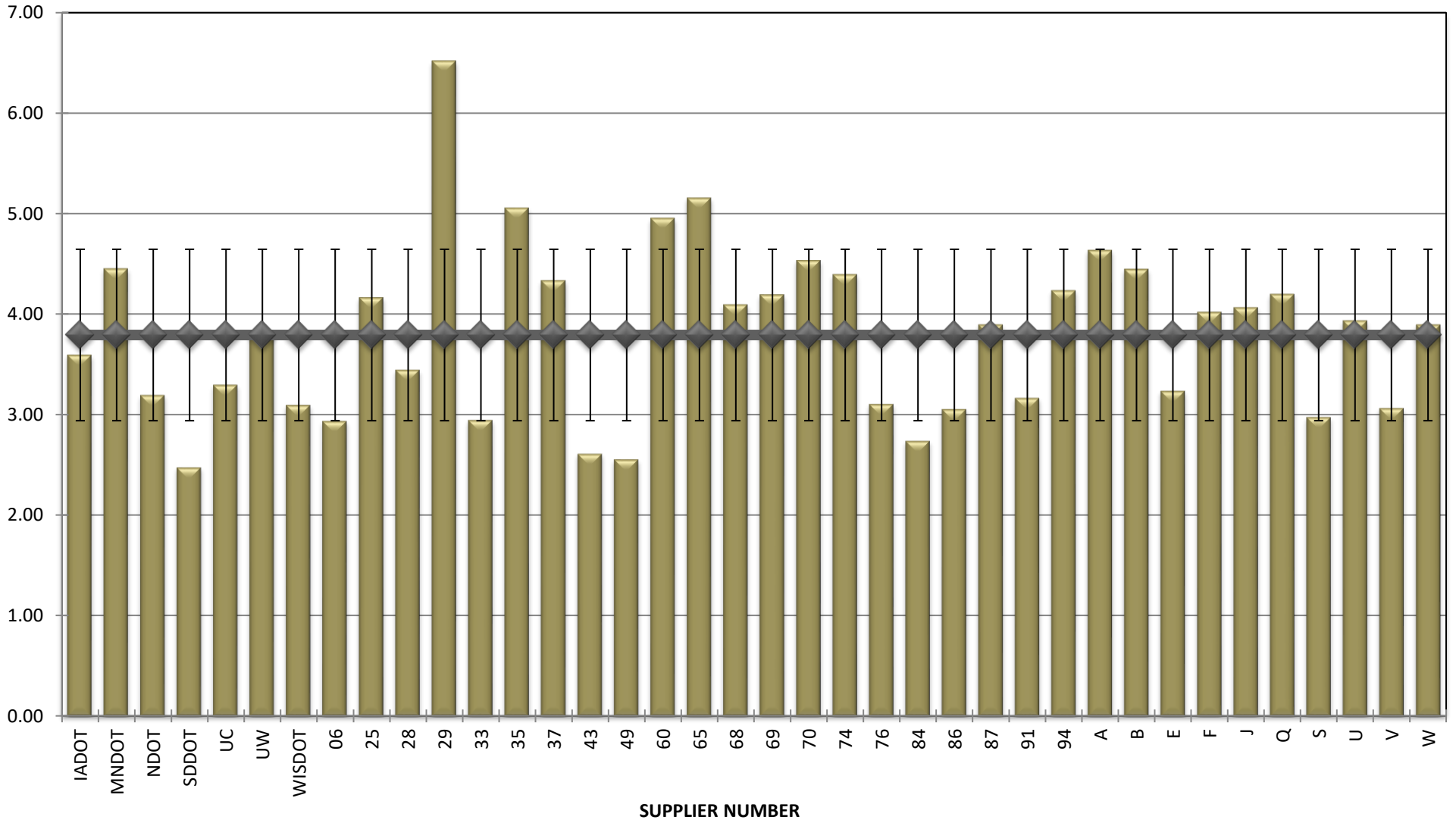
**COMBINED STATE BINDER GROUP ROUND ROBIN  
SUMMARY B 2022-1  
PG 64S-22**

**Jnr @ 100 Pa**



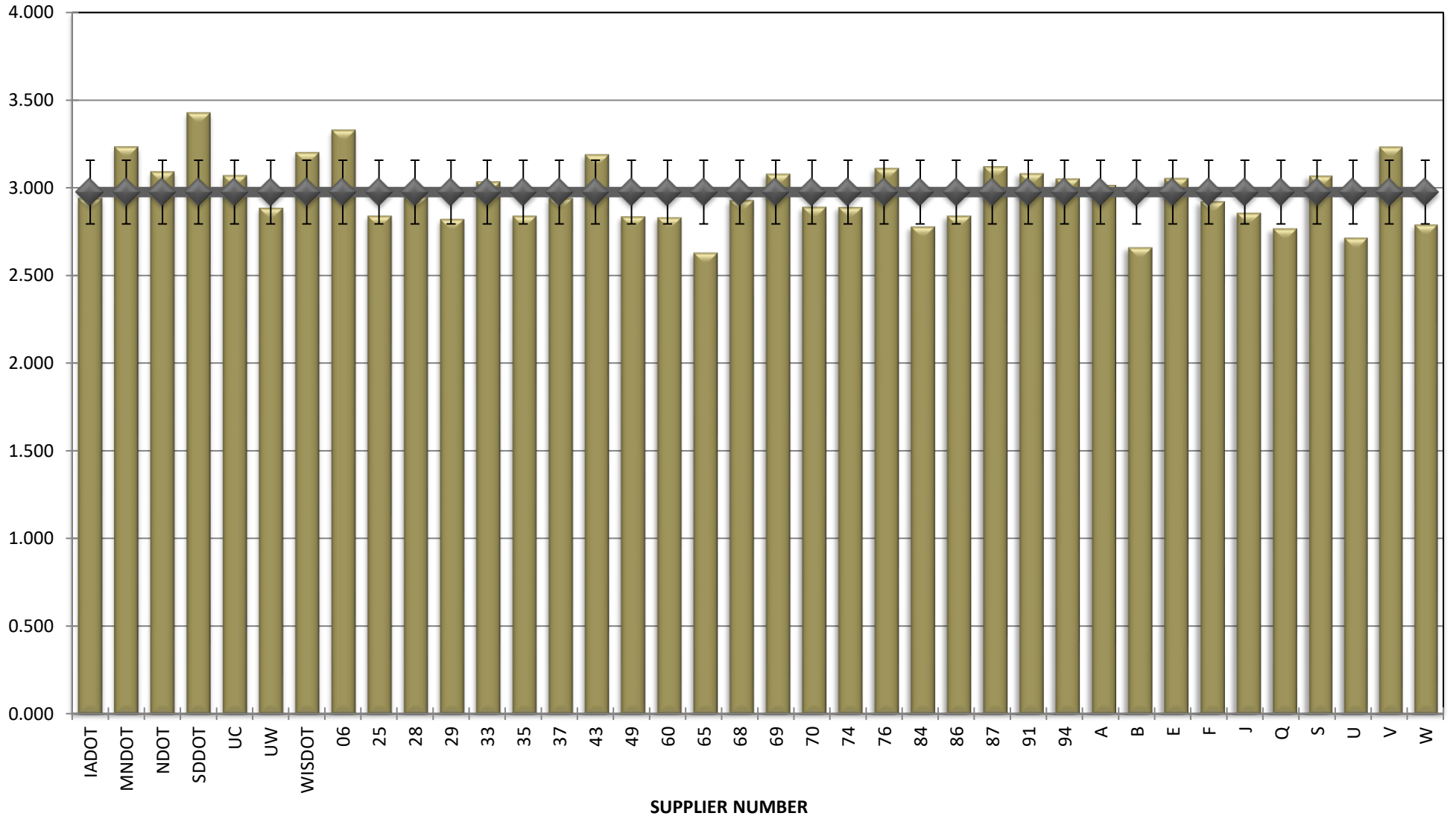
**COMBINED STATE BINDER GROUP ROUND ROBIN  
SUMMARY B 2022-1  
PG 64S-22**

**% Recovery @ 100 Pa**



**COMBINED STATE BINDER GROUP ROUND ROBIN  
SUMMARY B 2022-1  
PG 64S-22**

**Jnr @ 3200 Pa**



**COMBINED STATE BINDER GROUP ROUND ROBIN  
SUMMARY B 2022-1  
PG 64S-22**

**% Recovery @ 3200 Pa**

